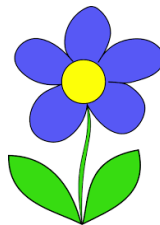
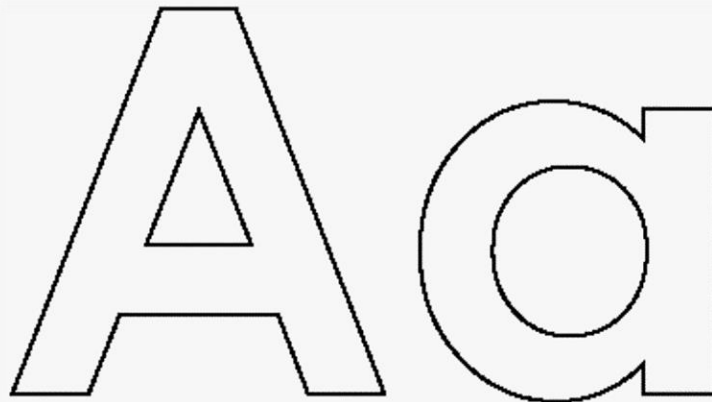
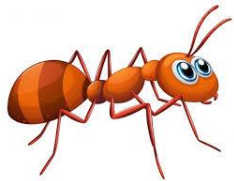


Name:

Instructions: Say the name of each picture. Can you hear the /A/ /a/ sound? Circle the pictures in with the short /a/ sound. Shade the inside the **Aa**.

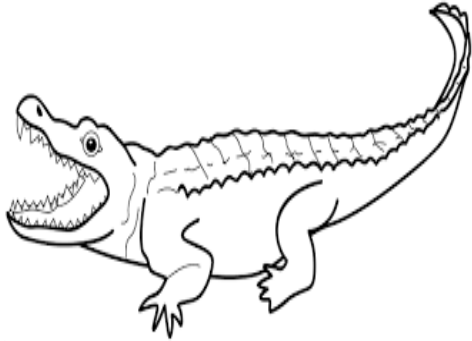


Year 2 Week 2 Day 1

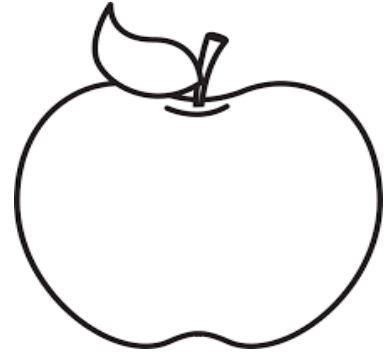


Name:

Instructions: Say the name of each picture. Colour the picture that begins with the short /a/ sound. Finger trace the letter **Aa**.



alligator



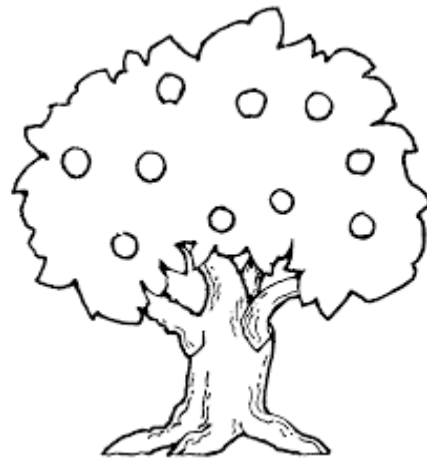
apple

A

a



ant



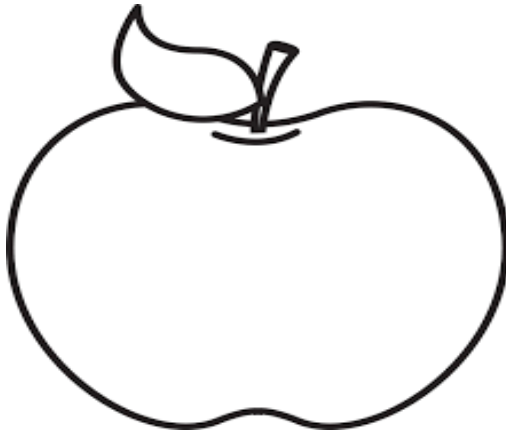
tree

Year 2 Week 2 Day 2

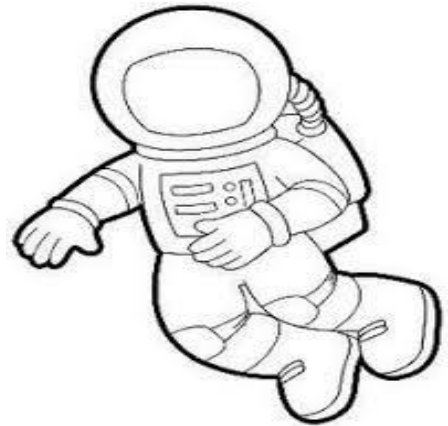


Name:

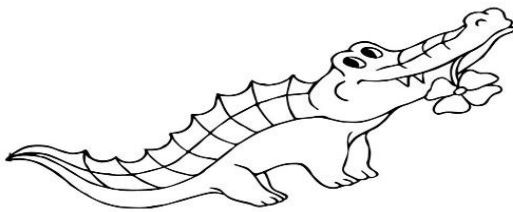
Instructions: Say the names of each picture. Complete the words by adding the beginning letter. Colour the pictures.



_pple



_stronaut



_lligator



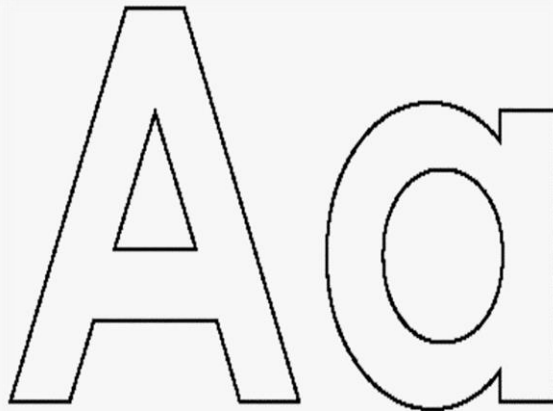
_nt

Year 2 Week 2 Day 3



Name:

Instructions: Say the name of each picture. Listen for the /A/ /a/ sound. Colour the inside of letter **Aa**



ant



apple



alligator

Instructions: Circle all the letter **Aa's**

A large blue rectangular area containing a grid of letters for a matching exercise. The letters are arranged in four rows and eight columns:

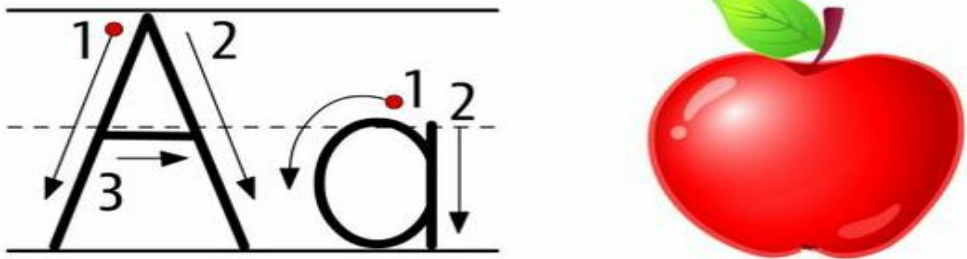
A	a	b	B	c	A	o	
A	z	a	A	o	a	a	
D	p	d	r	O	q	A	a
A	a	c	O	b	d	a	A a

Year 2 Week 2 Day 4



Name:

Instructions: Follow the guide/arrows to trace and write the uppercase **A** and lowercase **a**.



Tracing guide for uppercase **A** and lowercase **a**. The uppercase **A** is formed by three strokes: 1 (downward diagonal), 2 (downward diagonal), and 3 (horizontal bar). The lowercase **a** is formed by two strokes: 1 (counter-clockwise circle) and 2 (vertical line down). A red apple is shown to the right.

Tracing practice lines for uppercase **A** and lowercase **a**. The first row shows a solid **A** with stroke order arrows and numbers, followed by seven dashed **A** characters for tracing. The second row shows a solid **a** with stroke order arrows and numbers, followed by seven dashed **a** characters for tracing. The third row shows a solid **A** and a solid **a** followed by dashed **A** and **a** for tracing. The fourth row shows a dashed **a** followed by a solid **A** and a dashed **a** followed by a solid **A** for tracing. Below these are three blank sets of handwriting lines for independent practice.

Year 2 Week 2 Day 5

